

**Instructions :**

1. There are total 4 Sections in the Paper.
2. All sections are Compulsory.
3. Total marks for section are given at right side.

**Section 1 :**

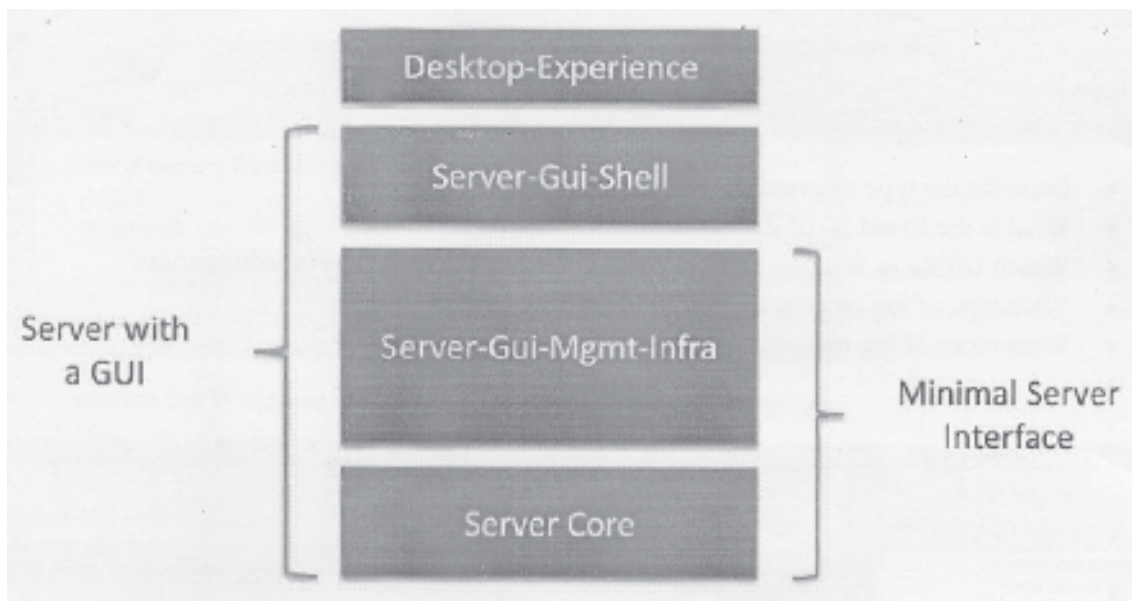
**Attempt any 4 (All questions carry equal marks).**

**20**

**(Picture Reading)**

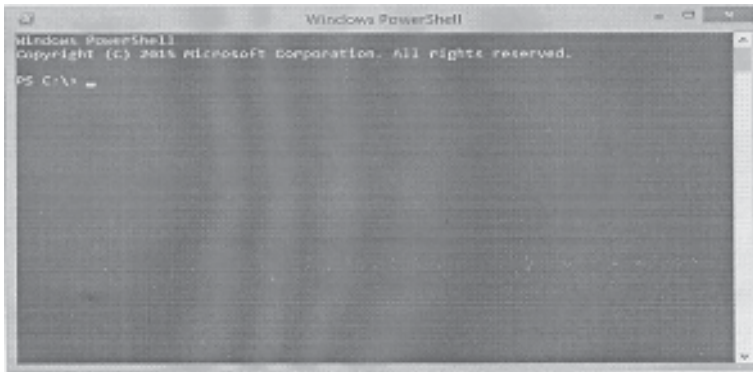
Observe the given picture and write your observation in full sentence with the help of points given below the picture.

1.



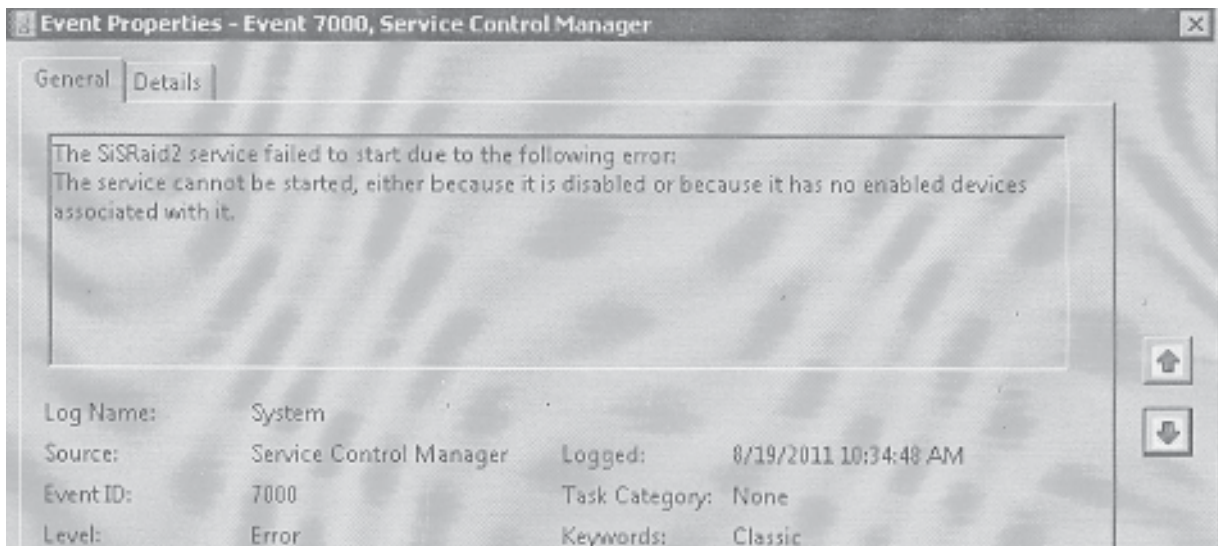
- Describe the Windows Server 2008 Feature shown in the picture?
- What are the benefits of using Server Core?
- Which type of user interface is used in Server Core?
- Which server roles can be configured in Server core?
- Which feature makes server core more secure?

2.



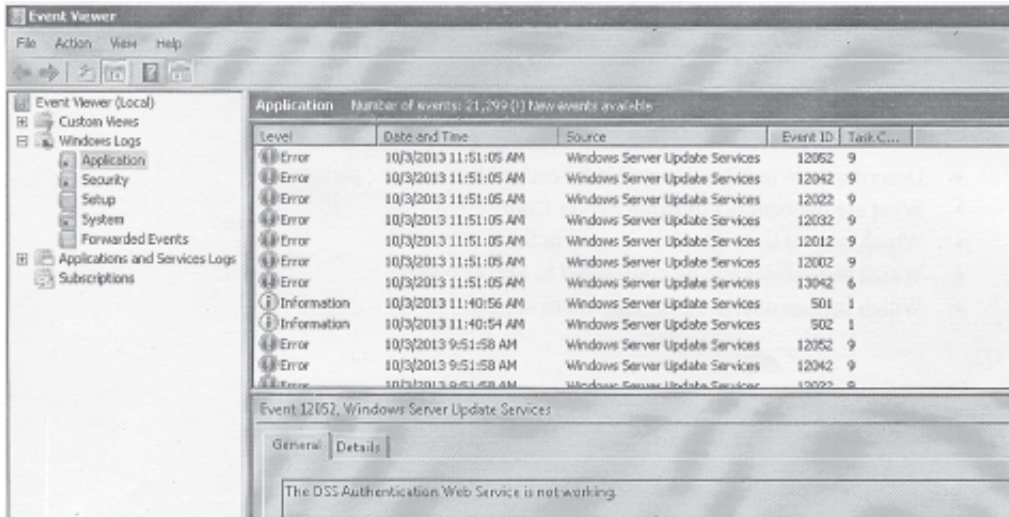
- Describe the Windows Server 2008 utility shown in the picture?
- What is the function of the Utility shown in the picture?
- What is the difference between Server Core and Power Shell?
- Can we use Power Shell Option on Server Core?
- Which command is used in Power Shell to show all the Services installed on a PC?

3.



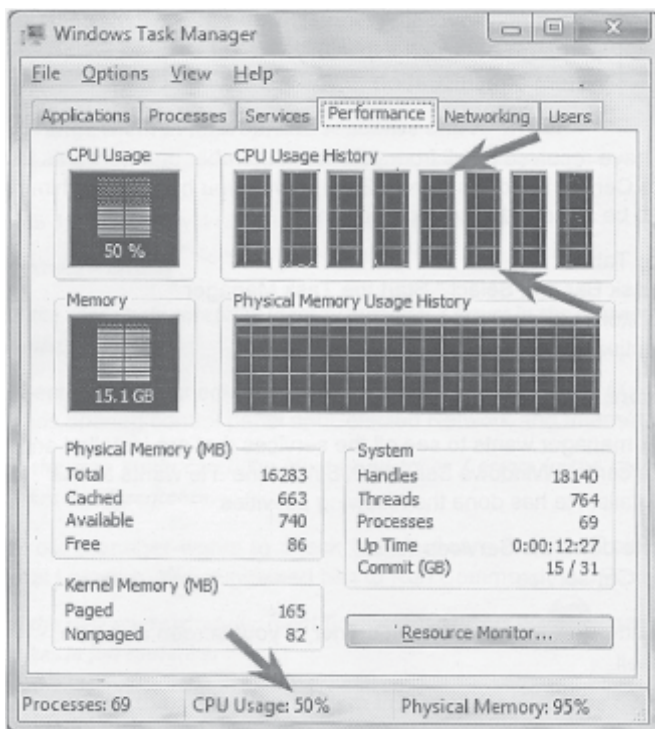
- Describe the type of event shown in the picture.
- What is the Event ID of the Error shown in the picture?
- Which Utility in Windows server 2008 is used to get such type of information?
- What type of log records are stored in security Logs?
- What types of log records are stored in Application Logs?

4.



- Describe the Windows Server 2008 utility shown in the picture.
- What is the function of the Utility shown in the picture?
- What information can be derived from System Logs?
- What information can be derived from Application Logs?
- What information can be derived from Set up Logs?

5.



- Describe the Windows server 2008 utility shown in the picture.
- What is the function of the Utility shown in the picture?

- How will you check the applications that are currently running on this server machine?
- What will happen if we will click on Resource Monitor Button shown in the picture?
- Can we use this utility on Windows 7 PC?

**Section 2 :**

**Attempt any 4 (All questions carry equal marks).**

**20**

**(Sequencing)**

Activities in a technical process/procedure are given. Arrange them in appropriate sequence and re-write.


1. Arrange the given windows Server 2008 utilities in a correct sequence to match the functions /characteristics they have.

<b>Windows server 2008 utilities</b>	<b>Functions</b>
Event Viewer	provides an instant view of the system's resources, such as memory usage, process activity, processor activity
Power Shell	Used to read event logs which help in troubleshooting an issue with your computer
Task Manager	provides a low-maintenance server environment that supports installing only certain server roles
Server Core	a command-line shell and scripting language designed especially for system administration

2. Let's imagine that you have received a call from your team member and he wants to see the CPU usage details of a Central Windows Server 2008 server, you have asked him to do certain steps which need to be arranged in correct sequence:
  - i) Select Performance Tab
  - ii) Right Click on the task Bar and Select "Start the Task Manager"
  - iii) Click Resource Monitor
  - iv) Click on the CPU option and Expand it to see the details

***Arrange them in appropriate sequence and re-write.***


3. Let's imagine that your manager wants to see all the services that are installed and running on your company's central Windows Server 2008 machine. He wants to use Power Shell to get these details. He has done the following activities
  - i) Press Enter and note down the Services listed

- ii) Type the command Get-service
- iii) Click on the Start button  in the lower left corner of your screen and type Windows Power Shell
- iv) Select Windows Power Shell

**Arrange them in appropriate sequence and re-write.**

4. Arrange the given types of Performance monitoring tools in Windows Server 2008 in a correct sequence to match them with their characteristics.

Performance monitoring tools	What It Does
Performance Monitor	Tool to identify which program/service is using resources
Resource Monitor	Visualization tool for viewing performance data, both in real time and from log files.
Task Manager	provides an instant view of the system's resources, such as memory usage, process activity, processor activity

5. Mahesh has decided to use the Event Viewer to find out log.records for Invalid login attempts on his company's central Windows Server 2008 machine. He has done the following activities:
- i) Click and Select Windows Logs
  - ii) Check for Invalid login attempts events if any
  - iii) Click on the Start button  in the lower left corner of screen and type Event Viewer
  - iv) Select Security Logs option and Expand it

**Arrange them in appropriate sequence and re-write.**

### Section 3 :

**Attempt any 4 (All questions carry equal marks).**

**20**

#### (Case Study - Errors)

Read the case study carefully; identify mistakes / errors in the processes. Write the mistakes in full sentence.

1. Geeta wants to check the memory usage details on your Windows Server 2008 machine. She has opened control panel and Selected Network and Internet option for the same.

**Read the case study carefully; identify mistakes / errors in the configuration process. Write the mistakes in full sentence.**



2. Your manager wants to check the Hardware Details of all the PCs in his LAN from a Central Location. You suggested him to Run Command Get-Process using Power Shell.  
*Read the case study carefully; identify mistakes / errors in the suggested process. Write the mistakes in full sentence.*
3. Anita wants to back up the System Image of her Windows Server 2008 machine. She decided to use Event Viewer option for it.  
*Read the case study carefully; identify mistakes / errors in the configuration process. Write the mistakes in full sentence.*
4. Sahil wants to restore the some important files which he is not able to find on the D Drive of his Windows Server 2008 machine. But Sahil has never used Windows Server Backup Option.  
*Read the case study carefully; identify mistakes / errors in the configuration process. Write the mistakes in full sentence.*
5. Your organization wants to centrally manage the shared network resources and their permissions for your LAN using scripts. You decided to use server Core Option for that.  
*Read the case study carefully; identify mistakes / errors in the configuration process. Write the mistakes in full sentence.*

#### **Section 4 :**

**Attempt any 4 (All questions carry equal marks).**

**20**

**(Conversation)**

Write conversation / prepare a requirement list after reading the scenario.

1. Sumit is working as the network administrator for a large organization. He is in charge of implementing company policies. He wants to use a secure Server Operating System which have a command line interface with No Graphical User Interface.  
*Read the scenario and write help document containing the detailed documentation about Server Core option in Windows Server 2008.*
2. Geeta is the network administrator for a large company. Her manager wants to automate many tasks using scripting and command line tools on windows server 2008 server PC.  
*Read the scenario and write a conversation between Geeta and her manager about How to use Power Shell option in Windows Server 2008.*

3. You have visited your uncle's home and he told you that he wants to create a System Image backup for his windows Server 2008 machine so that he can restore the server machine in case of any disaster.

***Read the scenario and write a conversation explaining him how to take a System Image Backup of Windows server 2008 machine.***

4. Your team member needs to check the details regarding Disk, CPU and Memory usage of a Central Windows server 2008 machine.

***Read the scenario and write an email explaining action that required to be taken by your team member.***

5. Vaibhav is using a Windows Server 2008 machine. He wants to see the list of all the applications that are running on his Windows Server 2008 machine.

***Read the scenario and write an Email explaining the action that required to be taken by Vaibhav.***

